



CLASSICAL TAHOE

CONTENTS


EIN: 45-2682958
Report Generated on: 03/28/2024

Executive Summary	2
Programs & Results	4
Financial Review	8
Operations & Leadership	10


APPENDIX

Key Documents	21
Charity Check Report	22


CLASSICAL TAHOE




aka 45-2682958, fka Lake Tahoe SummerFest



Incline Village, NV



ClassicalTahoe.org



(775)298-0245



[View GuideStar Profile](#)



MISSION

VISION: That Classical Tahoe is an internationally recognized celebration of the arts.

MISSION: To present world-class performances, nurture community partnerships and provide educational programs that all inspire, connect, and transform lives.

EIN

45-2682958

RULING YEAR

2012

IRS SUBSECTION

501(c)(3) Public Charity

FOUNDING YEAR

2011

MAIN ADDRESS

948 Incline Way
Incline Village, NV
89451

AFFILIATION TYPE

Independent Organization

CONTACT

Ms. Karen Craig, Executive
Director
(775) 298-0245
Karen@ClassicalTahoe.org

EXECUTIVE DIRECTOR

Karen Craig

BOARD CHAIR

Marna Broida

SUBJECT AREA

Arts and culture

Music

Tourism

Festivals

Youth development

NTEE Code

Arts, Cultural Organizations -
Multipurpose (A20)

County / Street / Civic / Multi-
Arts Fairs and Festivals (N52)

Other Youth Development
N.E.C. (O99)

PROGRAMS

1. Classical Tahoe Music Festival

Population(s) served:Adults, Families
2. Classical Tahoe Music Institute

Population(s) served:Children and youth, Seniors

POPULATIONS SERVED

1. Children and youth
2. Adults
3. Seniors
4. Families

COMPLIANCE

- ✓

IRS Pub 78 Verified as of March 2024
- ✓

IRS BMF 509(a) (1) as of March 12, 2024
- ✗

A-133 Audit Required/Performed?
- ✗

Conflict of Interest Policy
- ✓

Written whistleblower policy

Section 509(a)(1) organization as referred to in Section 170(b)(1)(A)(vi)

TRANSPARENCY MEASURES

- ✓

Board Practices Reported?
- ✓

Diversity Data Reported?
- 14

Number of Independent Board Members

Programs & Results

PROGRAMS

Source: Self-Reported by Organization,
January 2023

Classical Tahoe Music Festival

Population(s) Served:

Adults
Families

Classical Tahoe is a summer Music Festival featuring seven orchestra concerts, three chamber music concerts, three jazz performances, and a multigenerational Music Institute.

Classical Tahoe is led by Artistic Director and Principal Conductor Joel Revzen. Maestro Revzen is an award-winning conductor who made his Metropolitan Opera conducting debut in 2017. He has introduced some of the most sought-after soloists in the classical music world to Lake Tahoe. Laura Hamilton, Classical Tahoe's Concertmaster, is Principal Associate Concertmaster of the Metropolitan Opera Orchestra.

Revzen and Hamilton have assembled an orchestra of musicians from the Metropolitan Opera Orchestra, Los Angeles and New York Philharmonics, Philadelphia and Cleveland Orchestra, the symphonies of San Francisco, Seattle, Dallas, Toronto, Vancouver, and other exceptional organizations. Each musician is individually invited because of their unique artistry and experience. Nevada's celebrated violinist, Ruth Lenz, is a featured musician in the Classical Tahoe Orchestra.

Classical Tahoe Music Institute

Population(s) Served:

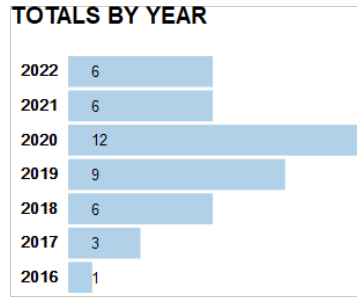
Children and youth (0-19 years)
Aging, elderly, senior citizens

The Classical Tahoe Music Institute, inaugurated in 2018, will offer multi-

generational programs for music education and appreciation including a Collegiate String Quartet Apprenticeship; partnerships with the Reno Pops Orchestra for a Community Orchestra and Sierra Nevada College for a Community Chorus; Young Musician's Piano Concerto Competition; Musikgarden for families; Music and Movement c a free Family Orchestra Concert and Music Maker's Faire; High School Jazz Workshop with Jazzmeia Horn; Honor Student Usher Program; a sing-along screening of Mamma Mia; free open rehearsals; "Inside Look" conversations with the Maestro; live program annotation for every concert; an on-stage business coaching session taught side-by-side with musicians; music therapy with The Note-Ables for Syrian refugee families; free master classes for talented young musicians; pop-up concerts on the trail, at the beach, and in the ice cream store.

RESULTS

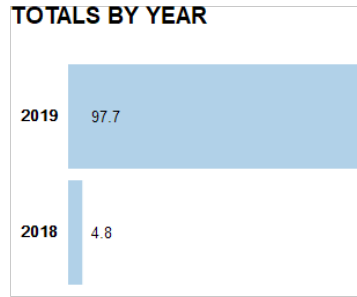
Total number of free performances given



Population(s) Served: No target populations selected

Related program: Classical Tahoe Music Institute

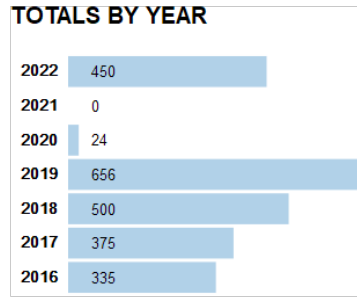
Net promoter score



Population(s) Served: No target populations selected

Related program: Classical Tahoe Music Festival

Number of free registrants to classes

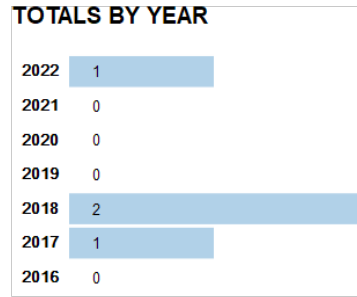


Population(s) Served: No target populations selected

Related program: Classical Tahoe Music Institute

Notes: Brubeck Jazz Summit faculty provided free 1:1 online instruction to 24 high school jazz musicians who were accepted to 2020 Brubeck Jazz Summit (in-person program cancelled due to pandemic).

Total number of works commissioned

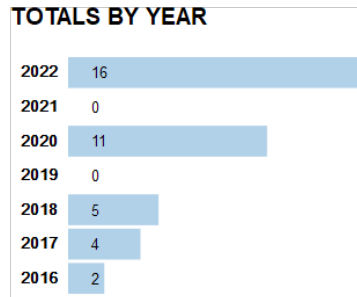


Population(s) Served: No target populations selected

Related program:

[More results from this organization's programs](#)

Number of pre-recorded hours of broadcast



Population(s) Served: No target populations selected

Related program:

CHARTING IMPACT

What is the organization aiming to accomplish?

Classical Tahoe is striving to become a world-class celebration of the arts whose mission is to inspire the cultural, educational & community vitality of Lake Tahoe.

What are the organization's key strategies for making this happen?

The Classical Tahoe Festival and Music Institute is held each summer in Incline Village on the north shore of Lake Tahoe, Nevada. The four-week festival features fourteen classical music concerts in July and August, with three jazz concerts, and fifty multigenerational education and engagement programs throughout the festival.

What are the organization's capabilities for doing this?

Maestro Joel Revzen, an assistant conductor at the Metropolitan Opera, is the founding Artistic Director and Principal Conductor. Laura Hamilton, Co-Concertmaster of the MET Opera Orchestra, is the Concertmaster and Personnel Manager of the Classical Tahoe Orchestra. Classical Tahoe is gaining an international reputation for its concert programming including several world premieres. Guest soloists have included Federica von Stade, Jamie Laredo, Chris Brubeck, Branford Marsalis, among others.

The Festival takes place on the campus of Sierra Nevada College in an intimate 400-seat "pop-up" concert pavilion.

The Classical Tahoe Music Institute was launched in 2018, offering 50 multi-generational music education and appreciation programs throughout the festival.

Classical Tahoe's administrative structure follows the League of American Orchestra's recommended organizational chart for mid-size orchestras.

Board Responsibility

There are nineteen directors on the board of Classical Tahoe. The board meets four times a year with five committees who meeting regularly to move forward the governance work of the organization. The Board of Directors oversees the work of the Executive and Artistic Directors. The board is focused on planning and oversight, resource development, and ensuring the longevity of the organization.

Leadership Team

The board and senior staff develop the organization's short- and long-term plans to support the mission. The staff prepares the budget and business plan. The board approves the annual budget and ensures the resources are available to execute the plan.

Staff Responsibilities

The artistic direction of the festival is developed and executed by Joel Revzen. Maestro Revzen has more than 50 years of artistic leadership experience. He oversees the artistic staff including the Music Librarian, Orchestra Personnel Manager, Concertmaster and Orchestra Musicians, and Production Manager to ensure that all artistic elements are properly planned and communicated to the staff.

The primary decision maker for the festival is Karen Craig who joined Classical Tahoe as the Executive Director in 2016. Karen Craig has more than 30 years of experience in arts administration. She is responsible for the management of all human and financial resources needed to achieve the organization's mission. She is accountable for all aspects of the organization and for implementing the policies set by the Board of Directors.

Advisory Board / Volunteer Responsibilities

Classical Tahoe has seven cultural, educational, and organizational experts on our Advisory Board including David Gockley, retired

general director of the San Francisco Opera (2006 to 2016) and Houston Grand Opera (1972 to 2005)

Joseph Kalichstein, Concert Pianist

Janet Napolitano, President, University of California

Mary Schroeder, Senior Circuit Judge on the United States Court of Appeals for the Ninth Circuit

Frederica von Stade, Opera Singer (M

What have and haven't they accomplished so far?

In seven short years, Classical Tahoe is becoming a summer destination for lovers of Classical Music.

- Enlarge our from 40 musicians to a 55-member orchestra to be able to play a more extensive repertoire and added jazz concerts to the festival for new diversity. Classical Tahoe is gaining an international reputation for our repertoire including several world premieres and our guest soloists who have included Federica von Stade, Jamie Laredo, Joseph Kalichstein, and Chris Brubeck. Released our first CD marking the highlights of Season's 1-5. These recordings have been aired more than a dozen times on Performance Today, the most-listened-to daily classical music radio program in the United States, with 1.2 million listeners on 237 stations

- CT purchased a new concert Pavilion that has fifteen tiered rows of luxury seats providing excellent sightlines and proximity to the stage. No seat is further than 50 feet from the orchestra. It is a thrilling experience to hear an orchestra of this remarkable caliber in the intimate 400-seat concert pavilion, performing repertoire most often heard in a larger hall. The audience feels as if they are on-stage with the musicians.

Our most transformative action was to launch the Classical Tahoe Music Institute to deepen Classical Tahoe's relationship and value in the community. The Classical Tahoe Music Institute, inaugurated in 2018, offers multi-generational programs for music education and appreciation including a Collegiate String Quartet Apprenticeship; partnerships with the Reno Pops Orchestra for a Community Orchestra and Sierra Nevada College for a Community Chorus; Young Musician's Piano Concerto Competition; Musikgarten for families; Music and Movement camp for K-6; a free Family Orchestra Concert and Music Maker's Faire; High School Jazz Workshop with International Jazz Masters; Honor Student Usher Program; free open rehearsals; "Inside Look" conversations with the Maestro; live program annotation for every concert; an on-stage business coaching session taught side-by-side with musicians; music therapy with The Note-Ables for trauma survivors; free master instruction for talented young orchestra musicians; pop-up concerts on the trail, at the beach, and in the ice cream store.

2016-2017-2018: KEY RESULTS

2,890-3,222-4,065: Total annual audience members

102-131-158: Total number of renewed concert subscriptions

10 -12-15: Total number of performances

1- 3 - 5: Total number of free performances given

0-35-85: Total number of students participating in private lessons

0 - 1 - 2: Number of works commissioned []

1-4-7: Number of pre-recorded concerts in a national broadcast

Financials

FISCAL YEAR START: 11/01
FISCAL YEAR END: 10/31

FINANCIALS QUICK VIEW

Surpluses in last 5 years	4
Negative Net Assets in past 5 years	0

Financial Trends Analysis

Business Model Indicators

Created in Partnership with



Profitability	2017	2019	2020	2021	2022
Unrestricted surplus (deficit) before depreciation	-\$8,458	\$84,822	\$169,527	\$182,732	-\$174,887
As a % of expenses	-0.9%	7.0%	21.4%	11.6%	-8.6%
Unrestricted surplus (deficit) after depreciation	-\$13,627	\$73,596	\$157,259	\$171,172	-\$187,063
As a % of expenses	-1.5%	6.0%	19.5%	10.8%	-9.2%
Revenue Composition					
Total revenue (unrestricted & restricted)	\$961,365	\$1,277,100	\$971,510	\$1,731,570	\$1,834,539
Total revenue, % change over prior year	5.0%	0.0%	-23.9%	78.2%	5.9%
Program services revenue	12.8%	19.8%	0.6%	13.9%	15.9%
Membership dues	0.0%	0.0%	0.0%	0.0%	0.0%
Investment income	0.0%	0.0%	0.0%	0.0%	0.0%
Government grants	0.0%	0.0%	0.3%	8.9%	0.0%
All other grants and contributions	87.2%	80.2%	99.0%	76.0%	80.8%
Other revenue	0.0%	0.0%	0.1%	1.2%	3.3%
Expense Composition					
Total expenses before depreciation	\$919,823	\$1,215,764	\$792,958	\$1,572,376	\$2,026,789
Total expenses, % change over prior year	2.4%	0.0%	-34.8%	98.3%	28.9%
Personnel	4.4%	12.9%	31.0%	18.1%	18.0%
Professional Fees	81.4%	55.5%	32.6%	44.2%	37.6%
Occupancy	0.2%	0.7%	0.2%	0.6%	0.4%
Interest	0.0%	0.0%	0.0%	0.0%	0.0%
Pass-Through	0.0%	0.0%	2.5%	0.9%	0.0%
All other expenses	14.1%	31.0%	33.7%	36.1%	44.0%

Financial Trends Analysis, continued

Moving Toward Full Cost Coverage

Full Cost Components (estimated)	2017	2019	2020	2021	2022
Total Expenses (after depreciation)	\$924,992	\$1,226,990	\$805,226	\$1,583,936	\$2,038,965
One Month of Savings	\$76,652	\$101,314	\$66,080	\$131,031	\$168,899
Debt Principal Repayment	\$0	\$0	\$0	\$0	\$0
Fixed Asset Additions	\$93,837	\$0	\$0	\$0	\$23,906
Total Full Costs (estimated)	\$1,095,481	\$1,328,304	\$871,306	\$1,714,967	\$2,231,770

Capital Structure Indicators

Liquidity					
Months of cash	0.5	1.1	4.8	3.5	1.3
Months of cash and investments	0.5	1.1	4.8	3.5	1.3
Months of estimated liquid unrestricted net assets	0.3	1.1	4.1	3.5	1.5
Balance Sheet Composition					
Cash	\$36,782	\$115,592	\$314,798	\$457,647	\$227,057
Investments	\$0	\$0	\$0	\$0	\$0
Receivables	\$0	\$9,027	\$0	\$0	\$0
Gross land, buildings, and equipment (LBE)	\$104,083	\$104,083	\$115,450	\$115,450	\$139,356
Accumulated depreciation (% of LBE)	8.8%	30.4%	38.0%	48.0%	48.5%
Liabilities (as % of assets)	14.6%	8.8%	12.7%	1.9%	3.9%
Unrestricted net assets	\$0	\$0	\$0	\$0	\$0
Temporarily restricted net assets	\$0	\$0	N/A	N/A	N/A
Permanently restricted net assets	\$0	\$0	N/A	N/A	N/A
Total restricted net assets	\$0	\$0	\$0	\$0	\$0
Total net assets	\$116,806	\$184,329	\$341,588	\$512,760	\$325,697

Key Data Checks

Material Data Errors	2017	2019	2020	2021	2022
	No	No	No	No	No

Note: This issue is relevant to a small number of organizations: The nonprofit subject(s) of this report may have affiliates. The Form 990 data may not include information about any or all potential affiliates. If an organization does have affiliates and these affiliates have substantial financial activity, the financial data in this report may not present a comprehensive picture of the nonprofit's financial condition. Please consult the 990s of any potentially related affiliates for additional information.

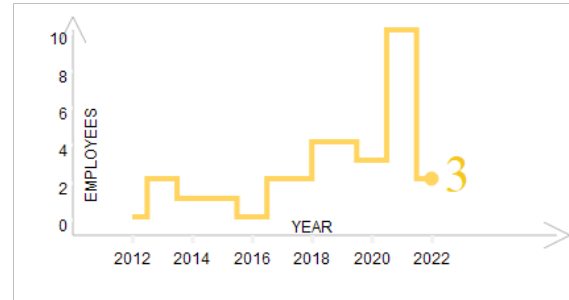
- ☒ [Formulas for key metrics](#)
- ☒ ['Key Revenue & Expense Data from Form 990'](#)
- ☒ ['Key Balance Sheet Data from Form 990'](#)

Operations

Source: Self-Reported by Organization, January 2023

NUMBER OF EMPLOYEES

Source: IRS Form 990



EXECUTIVE DIRECTOR

Ms. Karen Goldman Craig

Karen Craig joined Classical Tahoe as Executive Director in 2016.

Over the past thirty years, she has carved out a unique professional niche. Karen’s mission is to bring cities to life by placing people and experiences at the heart of economic development. She has an award-winning record of analyzing opportunities, connecting partners, strategizing solutions and mobilizing resources to transform communities.

Karen has been honored as the Civic Leader of the Year by the Reno/Sparks Chamber of Commerce, featured in the New Yorker’s “Talk of the Town,” and been called one of Nevada’s 20 Most Influential Leaders to Watch in the 21st Century. Her leadership in cultural economic development is evidenced across the country from Brooklyn, New York to Telluride, Colorado and Reno, Nevada. In 1996, Karen co-founded the ARTOWN FESTIVAL in Reno, Nevada, and served as Executive Director for seven years.

BOARD CHAIR

Marna Broida

President & Founder, In The Pink, Inc

Term: 2019 - 2022

BOARD CO-CHAIR

Renee Bouck

Term: 2019 - 2023

BOARD MEMBERS

- Ron Ashley
Oakmont Properties
- Renee Bouck
- Melanie Broida
FSF
- Madylon Meiling
Chemeon
- Alvaro Pascotto
- Linda Pascotto
- Susan Pridmore
- Steven Stull
Advantage Capital
- Ian Weiss
- Leslie Wittmann
- Victoria Kahn
- Dean Byrne
Whittier Trust
- Peter Garcia
ALX Oncology
- Caroline Kaplan
- Soraya Aguirre
Aguirre Riley

Kim Garcia

Steven Bouck

OFFICERS, DIRECTORS, TRUSTEES, AND KEY EMPLOYEES

FISCAL YEAR 2022

Name	Title	Compensation	Other	Related
Victoria Kahn	DIRECTOR	\$0	\$0	\$0
Soraya Aguirre	DIRECTOR	\$0	\$0	\$0
Steven Stull	DIRECTOR	\$0	\$0	\$0
Ian Weiss	DIRECTOR	\$0	\$0	\$0
Linda Pascotto	DIRECTOR	\$0	\$0	\$0
Alvaro Pascotto	DIRECTOR	\$0	\$0	\$0
Steven Bouck	TREASURER	\$0	\$0	\$0
Ron Ashley	DIRECTOR	\$0	\$0	\$0
Melanie Susan Broida	DIRECTOR	\$0	\$0	\$0
Dean Byrne	DIRECTOR	\$0	\$0	\$0
Kim Garcia	DIRECTOR	\$0	\$0	\$0
Peter Garcia	DIRECTOR	\$0	\$0	\$0
Caroline Kaplan	DIRECTOR	\$0	\$0	\$0
Marna Broida	CHAIRMAN	\$0	\$0	\$0
Renee Bouck	PRESIDENT	\$0	\$0	\$0
Susan Pridmore	SECRETARY	\$0	\$0	\$0
Madylon Meiling	SEARCH COMMITTEE CHAIRMAN	\$0	\$0	\$0
Leslie Wittmann	TRUSTEESHIP	\$0	\$0	\$0

OFFICERS, DIRECTORS, TRUSTEES, AND KEY EMPLOYEES

FISCAL YEAR 2021

Name	Title	Compensation	Other	Related
Marna Broirs	CHAIRMAN	\$0	\$0	\$0
Renee Bouck	PRESIDENT	\$0	\$0	\$0
Susan Pridmore	SECRETARY	\$0	\$0	\$0
Ron Ashley	DIRECTOR	\$0	\$0	\$0
Madylon Meiling	SEARCH COMMITTEE CHAIRMAN	\$0	\$0	\$0
Janet Pahl	DIRECTOR	\$0	\$0	\$0
Steven Stull	DIRECTOR	\$0	\$0	\$0
Ian Weiss	DIRECTOR	\$0	\$0	\$0
Leslie Wittmann	TRUSTEESHIP	\$0	\$0	\$0
Linda Pascotto	DIRECTOR	\$0	\$0	\$0
Alvaro Pascotto	DIRECTOR	\$0	\$0	\$0
Steven Bouck	TREASURER	\$0	\$0	\$0
Ron Ashley	DIRECTOR	\$0	\$0	\$0
Melanie Susan Broida	DIRECTOR	\$0	\$0	\$0
Victoria Eahn	DIRECTOR	\$0	\$0	\$0

OFFICERS, DIRECTORS, TRUSTEES, AND KEY EMPLOYEES

FISCAL YEAR 2020

Name	Title	Compensation	Other	Related
Ron Ashley	DIRECTOR	\$0	\$0	\$0
Melanie Werl	DIRECTOR	\$0	\$0	\$0
Florence Goldby	DIRECTOR	\$0	\$0	\$0
Steve Goldby	DIRECTOR	\$0	\$0	\$0
Madylon Meiling	DIRECTOR	\$0	\$0	\$0
Janet Pahl	DIRECTOR	\$0	\$0	\$0
Steven Stull	DIRECTOR	\$0	\$0	\$0
Ian Weiss	DIRECTOR	\$0	\$0	\$0
Leslie Wittmann	TRUSTEESHIP	\$0	\$0	\$0
Linda Pascotto	DIRECTOR	\$0	\$0	\$0
Alvaro Pascotto	DIRECTOR	\$0	\$0	\$0
Marna Broida	CO CHAIRMAN	\$0	\$0	\$0
Scott Minick	CO CHAIRMAN	\$0	\$0	\$0
Renee Bouck	PRESIDENT	\$0	\$0	\$0
Susan Pridmore	SECRETARY	\$0	\$0	\$0
Beth Minick	DIRECTOR	\$0	\$0	\$0
Steven Bouck	TREASURER	\$0	\$0	\$0

OFFICERS, DIRECTORS, TRUSTEES, AND KEY EMPLOYEES

FISCAL YEAR 2019

Name	Title	Compensation	Other	Related
Ron Ashley	DIRECTOR	\$0	\$0	\$0
Estel Binder	DIRECTOR	\$0	\$0	\$0
Wally Binder	DIRECTOR	\$0	\$0	\$0
Melanie Werl	DIRECTOR	\$0	\$0	\$0
Florence Goldby	DIRECTOR	\$0	\$0	\$0
Steve Goldby	DIRECTOR	\$0	\$0	\$0
Madylon Meiling	DIRECTOR	\$0	\$0	\$0
Janet Pahl	DIRECTOR	\$0	\$0	\$0
Steven Stull	DIRECTOR	\$0	\$0	\$0
Ian Weiss	DIRECTOR	\$0	\$0	\$0
Leslie Wittmann	DIRECTOR	\$0	\$0	\$0
Linda Pascotto	DIRECTOR	\$0	\$0	\$0
Alvaro Pascotto	DIRECTOR	\$0	\$0	\$0
Marna Broida	BOARD CHAIRMAN	\$0	\$0	\$0
Scott Minick	PRESIDENT	\$0	\$0	\$0
Renee Bouck	TREASURER	\$0	\$0	\$0
Susan Pridmore	DIRECTOR	\$0	\$0	\$0
Beth Minick	SECRETARY	\$0	\$0	\$0

OFFICERS, DIRECTORS, TRUSTEES, AND KEY EMPLOYEES

FISCAL YEAR 2017

Name	Title	Compensation	Other	Related
Anne Bowers Gerken	DIRECTOR	\$0	\$0	\$0
Melanie Broida	DIRECTOR	\$0	\$0	\$0
Florence Goldey	DIRECTOR	\$0	\$0	\$0
Karen Hovorka	DIRECTOR	\$0	\$0	\$0
Nora Lacey	DIRECTOR	\$0	\$0	\$0
Janet Pahl	DIRECTOR	\$0	\$0	\$0
Estel Binder	DIRECTOR	\$0	\$0	\$0
Wally Binder	DIRECTOR	\$0	\$0	\$0
Renee Bouck	DIRECTOR	\$0	\$0	\$0
Susan Pridmore	DIRECTOR	\$0	\$0	\$0
Steven Stull	DIRECTOR	\$0	\$0	\$0
Steve Goldby	DIRECTOR	\$0	\$0	\$0
Marna Broida	BOARD CHAIRMAN	\$0	\$0	\$0
Beth Minick	DIRECTOR	\$0	\$0	\$0
Ron Ashley	DEVELOPMENT CHAIR	\$0	\$0	\$0
Frank Laporge	GOVERNANCE CHAIR	\$0	\$0	\$0
Ian Weiss	PAST PRESIDENT	\$0	\$0	\$0
Scott Minick	PRESIDENT/ACTING TREASURER	\$0	\$0	\$0

Paid Preparers

FISCAL YEAR 2022

Firm Name	Firm EIN	Firm Address	Firm Phone
ASHLEY QUINN CPAS AND CONSULTANTS	88-0203872	937 TAHOE BOULEVARD SUITE 200, INCLINE VILLAGE NV 89451 USA	775-831-7288

Paid Preparers

FISCAL YEAR 2021

Firm Name	Firm EIN	Firm Address	Firm Phone
ASHLEY QUINN CPAS AND CONSULTANTS	88-0203872	937 TAHOE BOULEVARD, SUITE 200, INCLINE VILLAGE NV 89451 USA	775-831-7288

Paid Preparers

FISCAL YEAR 2020

Firm Name	Firm EIN	Firm Address	Firm Phone
ASHLEY QUINN CPAS AND CONSULTANTS	88-0203872	937 TAHOE BOULEVARD SUITE 200, INCLINE VILLAGE NV 89451 USA	775-831-7288

BOARD LEADERSHIP PRACTICES

GuideStar worked with BoardSource, the national leader in nonprofit board leadership and governance, to create this section, which enables organizations and donors to transparently share information about essential board leadership practices.

BOARD ORIENTATION & EDUCATION

Does the board conduct a formal orientation for new board members and require all board members to sign a written agreement regarding their roles, responsibilities, and expectations?

Yes

CEO OVERSIGHT

Has the board conducted a formal, written assessment of the chief executive within the past year?

Yes

ETHICS & TRANSPARENCY

Have the board and senior staff reviewed the conflict-of-interest policy and completed and signed disclosure statements in the past year?

Yes

BOARD COMPOSITION

Does the board ensure an inclusive board member recruitment process that results in diversity of thought and leadership?

Yes

BOARD PERFORMANCE

Has the board conducted a formal, written self-assessment of its performance within the past three years?

No

Organizational Demographics

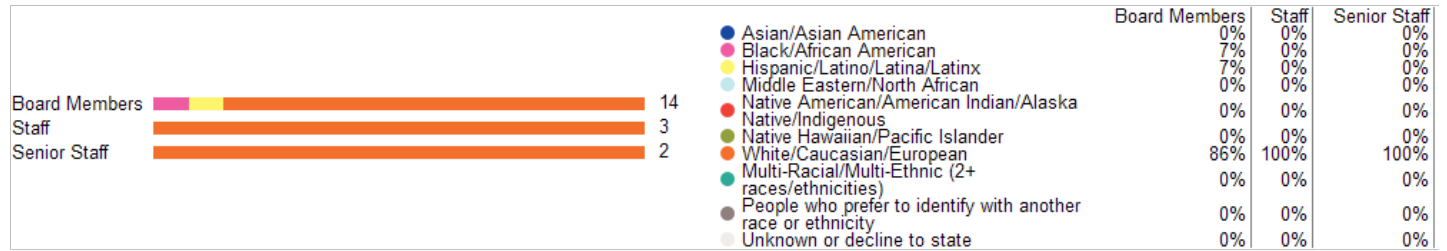
Who works and leads organizations that serve our diverse communities? This organization has voluntarily shared information to answer this important question and to support sector-wide learning. GuideStar partnered on this section with CHANGE Philanthropy and Equity in the Center.

Leadership

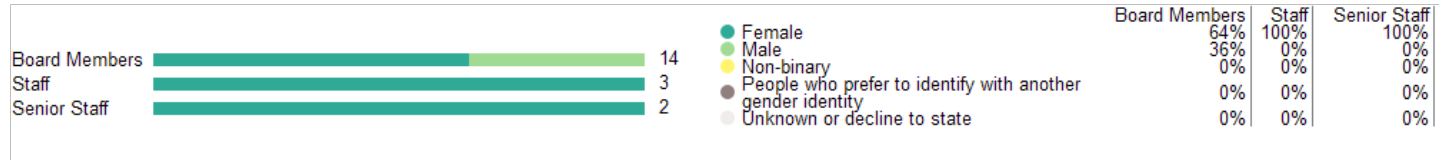
The organization's leader identifies as:

Race & Ethnicity	White/Caucasian/European
Gender Identity	Female, Not transgender
Sexual Orientation	Heterosexual or Straight
Disability Status	Person without a disability

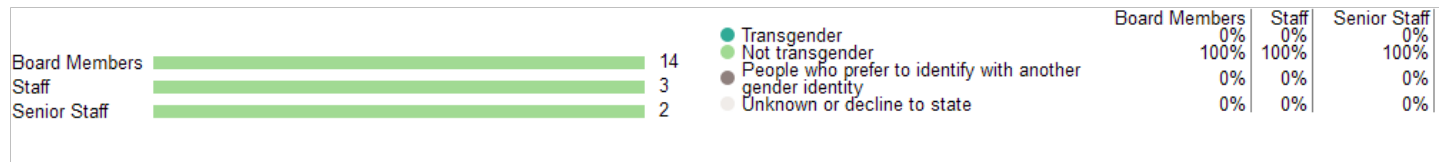
Race & Ethnicity



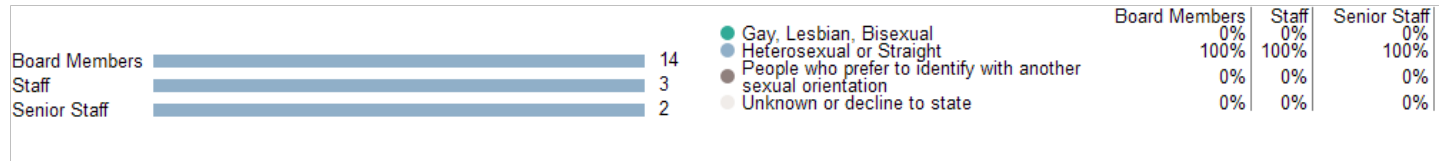
Gender Identity



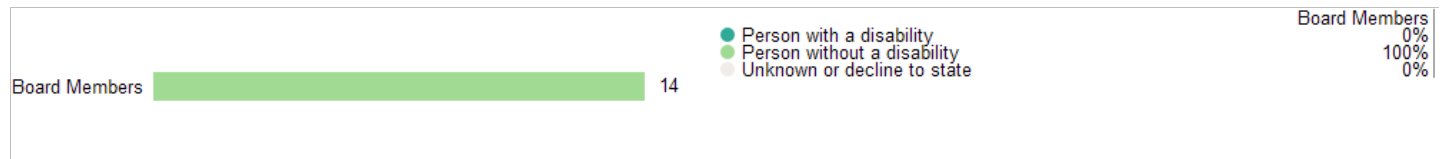
Transgender Identity



Sexual Orientation



Disability



We do not display staff or senior staff disability information for organizations with fewer than 15 staff.

Equity Strategies *Last Updated: 03/14/2021*

Candid partnered with Equity in the Center - a project that works to shift mindsets, practices, and systems within the social sector to increase racial equity - to create this section. [Learn More](#)

Data

- ✓ We review compensation data across the organization (and by staff levels) to identify disparities by race.
- ✓ We disaggregate data to adjust programming goals to keep pace with changing needs of the communities we support.
- ✓ We employ non-traditional ways of gathering feedback on programs and trainings, which may include interviews, roundtables, and external reviews with/by community stakeholders.
- ✓ We have long-term strategic plans and measurable goals for creating a culture such that one's race identity has no influence on how they fare within the organization.

Policies and processes

- ✓ We seek individuals from various race backgrounds for board and executive director/CEO positions within our organization.
- ✓ We help senior leadership understand how to be inclusive leaders with learning approaches that emphasize reflection, iteration, and adaptability.
- ✓ We engage everyone, from the board to staff levels of the organization, in race equity work and ensure that individuals understand their roles in creating culture such that one's race identity has no influence on how they fare within the organization.

Appendix

Key Documents

IRS Forms 990	2022 990
	2020 990
	2019 990
	2018 990
	2017 990
IRS Forms 990T	Not Available
Audited Financial Statements	2021 Audited Financial Statement
Key Organization Documents	Letter of Determination
	2021 Annual Report
	2020 Annual Report
	2019 Annual Report
	'Key Revenue & Expense Data from Form 990'
	'Key Balance Sheet Data from Form 990'

CLASSICAL TAHOE

Aka 45-2682958

948 Incline Way
Incline Village, NV 89451

✓ Foundation Status Code: PC*

✓ Public charity described in section 509(a)(1) or (2)

IRS Publication 78 Details			IRS Pub 78 verified
Organization name	Location	Most recent IRS Publication 78	
Classical Tahoe	Incline Vlg, NV	March 2024	
EIN	<u>Deductibility status description</u>	Verified with most recent Internal Revenue Bulletin	
45-2682958	A public charity (50% deductibility limitation).	March 25, 2024	

IRS Business Master File Details			IRS BMF	509(a)(1)
Organization name	Most recent IRS BMF	Reason for Non-Private Foundation Status		
CLASSICAL TAHOE	March 12 2024	Section 509(a)(1) organization as referred to in Section 170(b)(1)(A)(vi)		
EIN	IRS subsection	Ruling date		
45-2682958	This organization is a <u>501(c)(3) Public Charity</u>	02/2012		
This organization was not included in the Office of Foreign Assets Control Specially Designated Nationals (SDN) list.				

On September 8, 2011, the IRS issued regulations which eliminated the advance ruling process for a section 501(c)(3) organization. [Learn more](#)

* The Foundation Status Code is the code that foundations are required to provide for each grantee annually on part XV of Form 990PF. Note that this code cannot be derived in some cases (e.g., supporting organizations for which 'type' can't be determined).

IRS Revenue Procedure 2011-33 allows grantors to rely on third-party resources, such as GuideStar Charity Check, to obtain required Business Master File (BMF) data concerning a potential grantee's public charity classification under section 509 (a) (1), (2) or (3).

GuideStar Charity Check Data Sources	
-GuideStar acquires all IRS data directly from the Internal Revenue Service.	-The <u>IRS Automatic Revocation of Exemption List</u> contains organizations that have had their federal tax-exempt status automatically revoked for failing to file an annual return or notice with the IRS for three consecutive years.
- <u>IRS Publication 78 (Cumulative List of Organizations)</u> lists organizations that have been recognized by the Internal Revenue Service as eligible to receive tax-deductible contributions.	-The Foundation Status Code is a value derived by mapping the codes found on the <u>990PF filing instructions</u> to the corresponding codes in the IRS BMF. Note that not all codes are able to be mapped due to insufficient data.
-The <u>IRS Internal Revenue Bulletin</u> (IRB) lists changes in charitable status since the last Publication 78 release. Between the release of IRS Publication 78 and the subsequent IRS Internal Revenue Bulletin, the IRB date will reflect the most recent release date of IRS Publication 78.	-The Office of Foreign Assets Control (OFAC) <u>Specially Designated Nationals (SDN) list</u> organizations that are owned or controlled by targeted individuals, groups, and entities, such as terrorists or narcotics traffickers. Their assets are blocked and U.S. persons are generally prohibited from dealing with them.
-The <u>IRS Business Master File</u> lists approximately 1.7 million nonprofits registered with the IRS as tax-exempt organizations.	