



# Our Children Oregon

## CONTENTS

EIN: 93-1310666  
Report Generated on: 03/28/2024

Executive Summary	2
Programs & Results	4
Financial Review	7
Operations & Leadership	9

## APPENDIX

Key Documents	18
Charity Check Report	19

# Our Children Oregon

👤

 aka CTFO

📍

 Portland, OR

🌐

<http://ourchildrenoregon.org>

📞

 (503)2227102

🔗

[View GuideStar Profile](#)



## MISSION

Our Children Oregon is committed to advancing the common good of all Oregon children, ensuring all children have the resources and opportunities they need to reach their full potential.

## EIN

93-1310666

## RULING YEAR

2001

## IRS SUBSECTION

501(c)(3) Public Charity

## FOUNDING YEAR

1985

## MAIN ADDRESS

PO BOX 14694  
Portland, OR  
97293

## AFFILIATION TYPE

Independent Organization

## CONTACT

Ashley Light  
(503) 236-9754  
[ashley@ourchildrenoregon.org](mailto:ashley@ourchildrenoregon.org)

## EXECUTIVE DIRECTOR

Jenifer Wagley

## BOARD CHAIR

Lindsey Diercksen

## SUBJECT AREA

Equal opportunity in education

Child abuse

Child advocacy

Child welfare

Self-advocacy

Foundations

## NTEE Code

Child Abuse, Prevention of (I72)

Family Services (Adolescent  
Parents) (P45)

Named Trusts/Foundations  
N.E.C. (T90)

PROGRAMS

1. All Children Thrive (ACT) Collective
- Population(s) served:Children and youth

POPULATIONS SERVED

1. Children
2. Adolescents

COMPLIANCE

- ✓ IRS Pub 78 Verified as of March 2024
- ✓ IRS BMF 509(a) (1) as of March 12, 2024
- ✓ A-133 Audit Required/Performed?
- ✓ Conflict of Interest Policy
- ✓ Written whistleblower policy

Section 509(a)(1) organization as referred to in Section 170(b)(1)(A)(vi)

TRANSPARENCY MEASURES

- ✓ Board Practices Reported?
- ✓ Diversity Data Reported?
- 13 Number of Independent Board Members

# Programs & Results

---

## PROGRAMS

Source: Self-Reported by Organization,  
February 2024

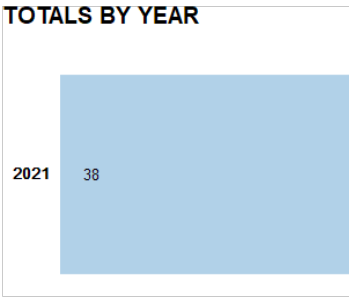
### All Children Thrive (ACT) Collective

**Population(s) Served:** n/a

All Children Thrive (ACT) Collective is a statewide network rooted in racial equity and dismantling systems that oppress, taking action on issues and policies impacting children and families.

RESULTS

Number of meetings or briefings held with policymakers or candidates

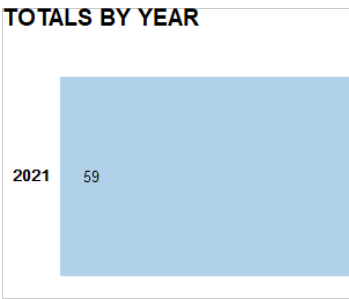


Population(s) Served: No target populations selected

Related program: All Children Thrive (ACT) Collective

Notes: In 2022, there were 45 meetings w/ legislators about overall Children's Agenda priorities, and in 2021, 38.

Number of testimonies offered

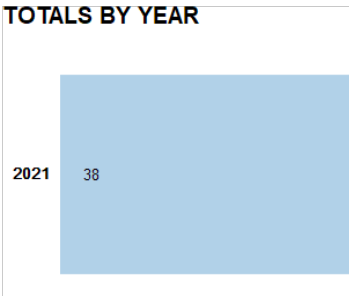


Population(s) Served: No target populations selected

Related program: All Children Thrive (ACT) Collective

Notes: In 2022, there were 42 testimony submissions in support of concepts, and in 2021, 59.

Number of concepts passed



Population(s) Served: No target populations selected

Related program: All Children Thrive (ACT) Collective

Notes: In 2022, 9 out of 10 concepts were passed, and in 2021, 38 out of 44 concepts were passed.

## CHARTING IMPACT

---

### What is the organization aiming to accomplish?

#### Policy and Advocacy Goals:

- Improve the engagement of Children's Agenda partners
  - Document and measure the influence of the Children's Agenda
  - Successfully launch a Youth-Led Cohort to support OCO's mission and scope of work.
- 

### What are the organization's key strategies for making this happen?

We advocate with and for systemically excluded communities for policies and solutions grounded in equity, resource youth to self-advocate, and connect, learn, and engage with Oregon communities to collaboratively activate meaningful change.

---

### What have and haven't they accomplished so far?

The 2022 Children's Agenda set forth a holistic set of policies and investments this year, uplifting impactful, equitable, and community-driven items to both advance new policy and see-through unfinished business. And today, we are celebrating the progress that this session made to live into this bold agenda and improve the lives of children and families across Oregon! Over the course of a short 32 days, the Oregon Legislature advanced policy and spending that will impact Oregonians for years to come, including all three of our session priorities:

- Oregon made a historic investment of nearly \$100M into our child care sector that will go towards supporting providers and increasing access to care for families across the state
- The legislature invested in taking health care directly to Black, Indigenous, People of Color (BIPOC) communities as a strategy to address racism as a public health crisis.
- Oregonians facing immigration issues will now have access to legal assistance, called universal representation, helping immigrant families stay together.

The 2021 Children's Agenda, a legislative policy agenda for Oregon's future, was comprised of 11 priorities amid a total of 44 items addressing the holistic, intersectional needs of children. Centered in racial equity, the Agenda was championed by over 115 partners statewide in order to align efforts, work collaboratively, and powerfully show up for Oregon's children, youth, and their families. 2021, unlike any other year, presented unique challenges to the typical legislative session. Whereas past sessions saw in-person engagement among advocates, policymakers, and the public in the halls of the Capitol, this year the legislative process was virtual in response to the public health concerns posed by the ongoing COVID-19 pandemic. We thank our partners and the communities that came together amid these challenging circumstances to advance meaningful legislation and investments for Oregon's children and families.

# Financials

**FISCAL YEAR START:** 07/01  
**FISCAL YEAR END:** 06/30  
✓ Financials audited by an independent accountant

## FINANCIALS QUICK VIEW

Total revenue, gains, and other support per audited financial statements	\$1,210,380
Total expenses and losses per audited financial statements	\$1,172,381
Surpluses in last 5 years	4
Negative Net Assets in past 5 years	0

## Financial Trends Analysis

### Business Model Indicators

Created in Partnership with  
 Nonprofit Finance Fund®

Profitability	2019	2020	2021	2022	2023
Unrestricted surplus (deficit) before depreciation	-\$44,343	\$77,429	\$1,221,106	-\$693,044	\$87,054
As a % of expenses	-12.5%	12.1%	130.1%	-62.6%	7.7%
Unrestricted surplus (deficit) after depreciation	-\$44,343	\$75,654	\$1,218,009	-\$694,744	\$85,999
As a % of expenses	-12.5%	11.7%	129.4%	-62.6%	7.6%
Revenue Composition					
Total revenue (unrestricted & restricted)	\$374,362	\$947,134	\$1,826,672	\$1,311,137	\$1,116,849
Total revenue, % change over prior year	-28.9%	153.0%	92.9%	-28.2%	-14.8%
Program services revenue	2.4%	6.9%	6.6%	8.4%	0.8%
Membership dues	0.0%	0.0%	0.0%	0.0%	0.0%
Investment income	35.2%	12.8%	7.0%	10.4%	10.9%
Government grants	0.0%	1.1%	7.2%	0.0%	0.0%
All other grants and contributions	37.1%	71.3%	38.7%	63.8%	67.7%
Other revenue	25.2%	8.0%	40.4%	17.4%	20.6%
Expense Composition					
Total expenses before depreciation	\$355,517	\$642,319	\$938,535	\$1,107,261	\$1,135,631
Total expenses, % change over prior year	-44.1%	80.7%	46.1%	18.0%	2.6%
Personnel	0.0%	46.0%	74.9%	71.6%	69.5%
Professional Fees	86.0%	37.8%	9.8%	14.7%	13.0%
Occupancy	0.0%	2.5%	2.3%	1.1%	2.2%
Interest	0.0%	0.0%	0.0%	0.0%	0.0%
Pass-Through	10.7%	6.5%	4.4%	3.8%	3.3%
All other expenses	3.3%	7.1%	8.7%	8.8%	12.0%

# Financial Trends Analysis, continued

## Moving Toward Full Cost Coverage

Full Cost Components (estimated)	2019	2020	2021	2022	2023
Total Expenses (after depreciation)	\$355,517	\$644,094	\$941,632	\$1,108,961	\$1,136,686
One Month of Savings	\$29,626	\$53,527	\$78,211	\$92,272	\$94,636
Debt Principal Repayment	\$0	\$0	\$132,374	\$0	\$0
Fixed Asset Additions	\$0	\$9,562	\$0	\$0	\$2,000
Total Full Costs (estimated)	\$385,143	\$707,183	\$1,152,217	\$1,201,233	\$1,233,322

## Capital Structure Indicators

Liquidity					
Months of cash	2.6	12.9	5.7	6.3	3.6
Months of cash and investments	166.3	97.2	79.5	59.9	59.8
Months of estimated liquid unrestricted net assets	167.1	93.9	79.8	60.1	59.5
Balance Sheet Composition					
Cash	\$76,639	\$688,234	\$446,154	\$584,626	\$341,102
Investments	\$4,849,537	\$4,514,054	\$5,770,698	\$4,946,763	\$5,319,728
Receivables	\$22,488	\$52,803	\$132,263	\$89,270	\$14,540
Gross land, buildings, and equipment (LBE)	\$0	\$41,024	\$23,313	\$21,399	\$23,399
Accumulated depreciation (% of LBE)	0.0%	81.0%	75.9%	83.6%	81.0%
Liabilities (as % of assets)	0.0%	3.5%	1.1%	0.8%	1.0%
Unrestricted net assets	\$4,950,216	\$5,025,870	\$6,243,879	\$5,549,135	\$5,635,134
Temporarily restricted net assets	\$0	N/A	N/A	N/A	N/A
Permanently restricted net assets	\$0	N/A	N/A	N/A	N/A
Total restricted net assets	\$0	\$55,000	\$51,500	\$48,000	\$0
Total net assets	\$4,950,216	\$5,080,870	\$6,295,379	\$5,597,135	\$5,635,134

## Key Data Checks

Material Data Errors	2019	2020	2021	2022	2023
	No	No	No	No	No

Note: This issue is relevant to a small number of organizations: The nonprofit subject(s) of this report may have affiliates. The Form 990 data may not include information about any or all potential affiliates. If an organization does have affiliates and these affiliates have substantial financial activity, the financial data in this report may not present a comprehensive picture of the nonprofit's financial condition.Please consult the 990s of any potentially related affiliates for additional information.

- ☒ [Formulas for key metrics](#)
- ☒ ['Key Revenue & Expense Data from Form 990'](#)
- ☒ ['Key Balance Sheet Data from Form 990'](#)



# Operations

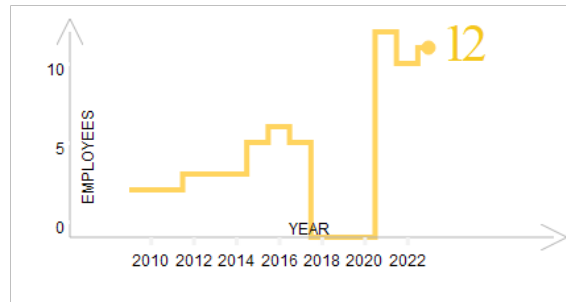
Source: Self-Reported by Organization, February 2024

## EXECUTIVE DIRECTOR

Jenifer Wagley

## NUMBER OF EMPLOYEES

Source: IRS Form 990



## BOARD CHAIR

Lindsey Diercksen

LD Consulting LLC

## BOARD MEMBERS

James Crouser

Pancho Savery

Reed College

Jabin Kahl

Providence

Shawn DuBurg

Private Bank

Lindsey Diercksen

LD Consulting LLC

Carol Helfer

Northwest Regional Education Service District

Graham Sheldon

Sharon Soliday

The Hello Foundation

Rita Sullivan

Irvin Brown

Brianne Hood Kothari

Human Development and Family Sciences (HDFS)

Staci Martin

Portland State University

Matt Bartolotti

Metropolitan Family Service

## OFFICERS, DIRECTORS, TRUSTEES, AND KEY EMPLOYEES

FISCAL YEAR 2022

Name	Title	Compensation	Other	Related
Jenifer Wagley	EXECUTIVE DI	\$128,671	\$6,975	\$0
David Penilton	CHAIR	\$0	\$0	\$0
Megan Mcaninch-Jones	VICE CHAIR	\$0	\$0	\$0
Jabin Jai Kahl	TREASURER	\$0	\$0	\$0
Pancho Savery	SECRETARY	\$0	\$0	\$0
Shawn Duburg	TRUSTEE	\$0	\$0	\$0
Sharon Soliday	TRUSTEE	\$0	\$0	\$0
James L Crouser	TRUSTEE	\$0	\$0	\$0
Lindsey Diercksen	TRUSTEE	\$0	\$0	\$0
Harold Goldstein	TRUSTEE	\$0	\$0	\$0
Carol Helfer	TRUSTEE	\$0	\$0	\$0
Drew Henrie-Mcwilliams	TRUSTEE	\$0	\$0	\$0
Rosa Klein	TRUSTEE	\$0	\$0	\$0
Annette Mattson	TRUSTEE	\$0	\$0	\$0
Graham Sheldon	TRUSTEE	\$0	\$0	\$0
Rita Sullivan PhD	TRUSTEE	\$0	\$0	\$0

**OFFICERS, DIRECTORS, TRUSTEES, AND KEY EMPLOYEES**

FISCAL YEAR 2021

Name	Title	Compensation	Other	Related
Jenifer Wagley	EXECUTIVE DI	\$115,239	\$6,053	\$0
Carolina Carol Selva R	TRUSTEE	\$0	\$0	\$0
Claudia Black	TRUSTEE	\$0	\$0	\$0
Angie Blackwell	TRUSTEE	\$0	\$0	\$0
Bryana Blessinger	TRUSTEE	\$0	\$0	\$0
Kathy Calcagno	CO-CHAIR	\$0	\$0	\$0
James L Crouser	TRUSTEE	\$0	\$0	\$0
Lindsey Diercksen	TRUSTEE	\$0	\$0	\$0
Shawn Duburg	BOARD TREASU	\$0	\$0	\$0
Kristine Phillips Evertz	TRUSTEE	\$0	\$0	\$0
Harold Goldstein	TRUSTEE	\$0	\$0	\$0
Carol Helfer	TRUSTEE	\$0	\$0	\$0
Drew Henrie-Mcwilliams	TRUSTEE	\$0	\$0	\$0
Jabin Jai Kahl	TREASURER	\$0	\$0	\$0
Rosa Klein	TRUSTEE	\$0	\$0	\$0
Annette Mattson	TRUSTEE	\$0	\$0	\$0
Megan Mcaninch-Jones	VICE CHAIR	\$0	\$0	\$0
Rita Sullivan PhD	TRUSTEE	\$0	\$0	\$0
David Penilton	CHAIR	\$0	\$0	\$0
Pancho Savery	SECRETARY	\$0	\$0	\$0
Graham Sheldon	TRUSTEE	\$0	\$0	\$0
Sharon Soliday	CO-CHAIR	\$0	\$0	\$0
Hanna Vaandering	TRUSTEE	\$0	\$0	\$0

**OFFICERS, DIRECTORS, TRUSTEES, AND KEY EMPLOYEES**

FISCAL YEAR 2020

Name	Title	Compensation	Other	Related
Carolina Carol Selva R	TRUSTEE	\$0	\$0	\$0
Martin Taylor R	TRUSTEE	\$0	\$0	\$0
Brent Barton	TRUSTEE	\$0	\$0	\$0
Claudia Black	TRUSTEE	\$0	\$0	\$0
Angie Blackwell	TRUSTEE	\$0	\$0	\$0
Kathy Calcagno	CO-CHAIR	\$0	\$0	\$0
James L Crouser	TRUSTEE	\$0	\$0	\$0
Shawn Duburg	BOARD TREASU	\$0	\$0	\$0
Kristine Phillips Evertz	TRUSTEE	\$0	\$0	\$0
Brett Fisher	TRUSTEE	\$0	\$0	\$0
Drew Henrie-Mcwilliams	TRUSTEE	\$0	\$0	\$0
Annette Mattson	TRUSTEE	\$0	\$0	\$0
Megan Mcaninch-Jones	VICE CHAIR	\$0	\$0	\$0
Rajan Mehndiratta	TRUSTEE	\$0	\$0	\$0
Renee Moseley	TRUSTEE	\$0	\$0	\$0
Rita Sullivan PhD	TRUSTEE	\$0	\$0	\$0
Sharon Soliday	CO-CHAIR	\$0	\$0	\$0
Hanna Vaandering	TRUSTEE	\$0	\$0	\$0
Youlee You	SECRETARY	\$0	\$0	\$0
Jenifer Wagley	EXECUTIVE DI	\$0	\$0	\$0

## OFFICERS, DIRECTORS, TRUSTEES, AND KEY EMPLOYEES

FISCAL YEAR 2019

Name	Title	Compensation	Other	Related
Kathy Calcagno	CHAIR	\$0	\$0	\$0
Megan Mcaninch-Jones	VICE CHAIR	\$0	\$0	\$0
Youlee You	SECRETARY	\$0	\$0	\$0
Kevin Kerstiens	TREASURER	\$0	\$0	\$0
Rajan Mehndiratta	FINANCE COMM	\$0	\$0	\$0
Brent Barton	TRUSTEE	\$0	\$0	\$0
Claudia Black	TRUSTEE	\$0	\$0	\$0
Angie Blackwell	TRUSTEE	\$0	\$0	\$0
Brett Fisher	TRUSTEE	\$0	\$0	\$0
Renee Moseley	TRUSTEE	\$0	\$0	\$0
Rita Sullivan	TRUSTEE	\$0	\$0	\$0
Katherine Hendrix	INT CONTRACT	\$0	\$0	\$0
Jenifer Wagley	CONTRACT EXE	\$0	\$0	\$0
Tonia Hunt	CONTRACT EXE	\$0	\$0	\$0

**Paid Preparers**  
FISCAL YEAR 2023

Firm Name	Firm EIN	Firm Address	Firm Phone
LAUKA MCGUIRE PC	93-1093736	3511 SE MILWAUKIE AVE, PORTLAND OR 97202 USA	503-233-2177

**Paid Preparers**  
FISCAL YEAR 2022

Firm Name	Firm EIN	Firm Address	Firm Phone
LAUKA MCGUIRE PC	93-1093736	3511 SE MILWAUKIE AVE, PORTLAND OR 97202 USA	503-233-2177

**Paid Preparers**  
FISCAL YEAR 2021

Firm Name	Firm EIN	Firm Address	Firm Phone
LAUKA MCGUIRE PC	93-1093736	3511 SE MILWAUKIE AVE, PORTLAND OR 97202 USA	503-233-2177

BOARD LEADERSHIP PRACTICES

GuideStar worked with BoardSource, the national leader in nonprofit board leadership and governance, to create this section, which enables organizations and donors to transparently share information about essential board leadership practices.

BOARD ORIENTATION & EDUCATION

Does the board conduct a formal orientation for new board members and require all board members to sign a written agreement regarding their roles, responsibilities, and expectations?

Yes

CEO OVERSIGHT

Has the board conducted a formal, written assessment of the chief executive within the past year?

Not Applicable

ETHICS & TRANSPARENCY

Have the board and senior staff reviewed the conflict-of-interest policy and completed and signed disclosure statements in the past year?

Yes

BOARD COMPOSITION

Does the board ensure an inclusive board member recruitment process that results in diversity of thought and leadership?

Yes

BOARD PERFORMANCE

Has the board conducted a formal, written self-assessment of its performance within the past three years?

Not Applicable

## Organizational Demographics

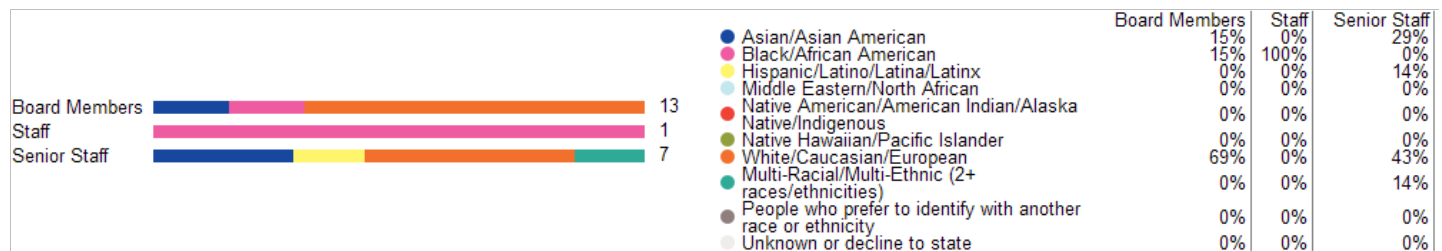
Who works and leads organizations that serve our diverse communities? This organization has voluntarily shared information to answer this important question and to support sector-wide learning. GuideStar partnered on this section with CHANGE Philanthropy and Equity in the Center.

### Leadership

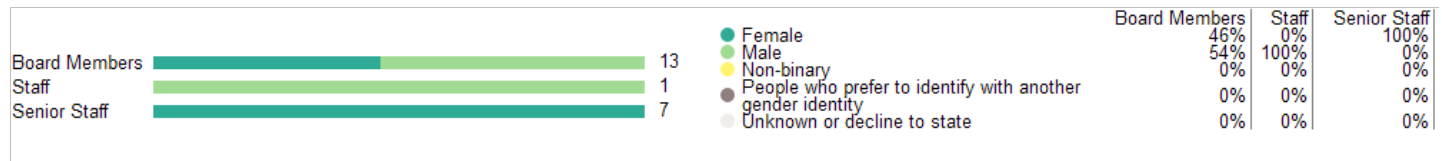
The organization's leader identifies as:

Race & Ethnicity	White/Caucasian/European
Gender Identity	Female, Not transgender
Sexual Orientation	Gay, Lesbian, Bisexual, or other sexual orientations in the LGBTQIA+ community
Disability Status	Person without a disability

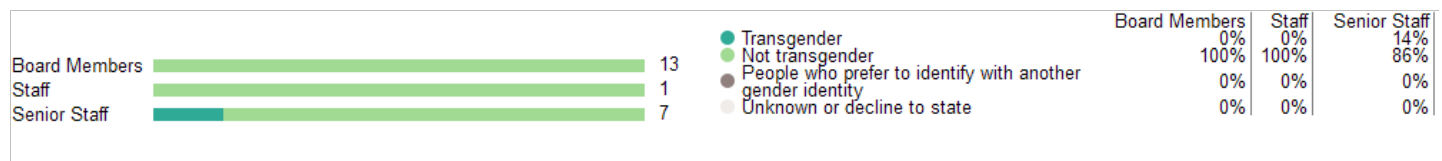
### Race & Ethnicity



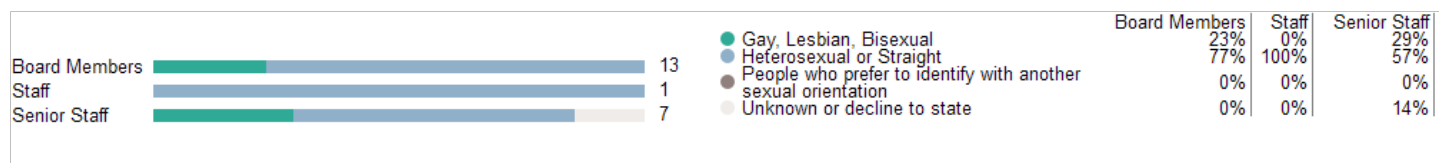
### Gender Identity



### Transgender Identity



### Sexual Orientation



### Disability

No data.

We do not display staff or senior staff disability information for organizations with fewer than 15 staff.



## Equity Strategies *Last Updated: 02/26/2024*

Candid partnered with Equity in the Center - a project that works to shift mindsets, practices, and systems within the social sector to increase racial equity - to create this section. [Learn More](#)

### Data

- ✓ We review compensation data across the organization (and by staff levels) to identify disparities by race.
- ✓ We ask team members to identify racial disparities in their programs and/or portfolios.
- ✓ We analyze disaggregated data and root causes of race disparities that impact the organization's programs, portfolios, and the populations served.
- ✓ We disaggregate data to adjust programming goals to keep pace with changing needs of the communities we support.
- ✓ We employ non-traditional ways of gathering feedback on programs and trainings, which may include interviews, roundtables, and external reviews with/by community stakeholders.
- ✓ We disaggregate data by demographics, including race, in every policy and program measured.

### Policies and processes

- ✓ We use a vetting process to identify vendors and partners that share our commitment to race equity.
- ✓ We seek individuals from various race backgrounds for board and executive director/CEO positions within our organization.
- ✓ We have community representation at the board level, either on the board itself or through a community advisory board.
- ✓ We help senior leadership understand how to be inclusive leaders with learning approaches that emphasize reflection, iteration, and adaptability.
- ✓ We engage everyone, from the board to staff levels of the organization, in race equity work and ensure that individuals understand their roles in creating culture such that one's race identity has no influence on how they fare within the organization.

# Appendix

Key Documents

IRS Forms 990	<a href="#">2023 990</a>
	<a href="#">2022 990</a>
	<a href="#">2021 990</a>
	<a href="#">2019 990</a>
	<a href="#">2018 990</a>
IRS Forms 990T	Not Available
Audited Financial Statements	<a href="#">2023 Audited Financial Statement</a>
	<a href="#">2021 Audited Financial Statement</a>
Key Organization Documents	<a href="#">'Key Revenue &amp; Expense Data from Form 990'</a>
	<a href="#">'Key Balance Sheet Data from Form 990'</a>

Our Children Oregon

Aka CTFO

PO Box 14694  
Portland, OR 97293

✓ Foundation Status Code: PC\*

✓ Public charity described in section 509(a)(1) or (2)

IRS Publication 78 Details			<div>✓ IRS Pub 78 verified</div>
Organization name	Location	Most recent IRS Publication 78	
Our Children Oregon	Portland, OR	March 2024	
EIN	<u>Deductibility status description</u>	Verified with most recent Internal Revenue Bulletin	
93-1310666	A public charity (50% deductibility limitation).	March 25, 2024	

IRS Business Master File Details			IRS BMF	509(a)(1)
Organization name	Most recent IRS BMF	Reason for Non-Private Foundation Status		
OUR CHILDREN OREGON	March 12 2024	Section 509(a)(1) organization as referred to in Section 170(b)(1)(A)(vi)		
EIN	IRS subsection	Ruling date		
93-1310666	This organization is a <u>501(c)(3) Public Charity</u>	04/2001		
This organization was not included in the Office of Foreign Assets Control Specially Designated Nationals (SDN) list.				

On September 8, 2011, the IRS issued regulations which eliminated the advance ruling process for a section 501(c)(3) organization. [Learn more](#)

\* The Foundation Status Code is the code that foundations are required to provide for each grantee annually on part XV of Form 990PF. Note that this code cannot be derived in some cases (e.g., supporting organizations for which 'type' can't be determined).

IRS Revenue Procedure 2011-33 allows grantors to rely on third-party resources, such as GuideStar Charity Check, to obtain required Business Master File (BMF) data concerning a potential grantee's public charity classification under section 509 (a) (1), (2) or (3).

GuideStar Charity Check Data Sources	
-GuideStar acquires all IRS data directly from the Internal Revenue Service.	-The <u>IRS Automatic Revocation of Exemption List</u> contains organizations that have had their federal tax-exempt status automatically revoked for failing to file an annual return or notice with the IRS for three consecutive years.
- <u>IRS Publication 78 (Cumulative List of Organizations)</u> lists organizations that have been recognized by the Internal Revenue Service as eligible to receive tax-deductible contributions.	-The Foundation Status Code is a value derived by mapping the codes found on the <u>990PF filing instructions</u> to the corresponding codes in the IRS BMF. Note that not all codes are able to be mapped due to insufficient data.
-The <u>IRS Internal Revenue Bulletin</u> (IRB) lists changes in charitable status since the last Publication 78 release. Between the release of IRS Publication 78 and the subsequent IRS Internal Revenue Bulletin, the IRB date will reflect the most recent release date of IRS Publication 78.	-The Office of Foreign Assets Control (OFAC) <u>Specially Designated Nationals (SDN) list</u> organizations that are owned or controlled by targeted individuals, groups, and entities, such as terrorists or narcotics traffickers. Their assets are blocked and U.S. persons are generally prohibited from dealing with them.
-The <u>IRS Business Master File</u> lists approximately 1.7 million nonprofits registered with the IRS as tax-exempt organizations.	