

Shining Hope Farms

Annual Report Based on Fiscal Year 2011

Shining Hope Farms is a 501(c)(3) organization created for, but not limited to, providing therapeutic horseback riding to children and adults with disabilities.

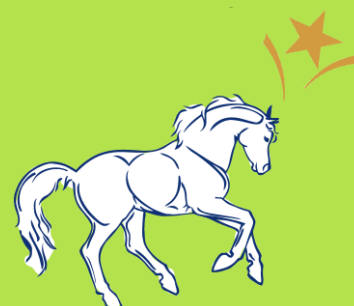
Shining Hope Farms

Annual Report Based on Fiscal Year 2011

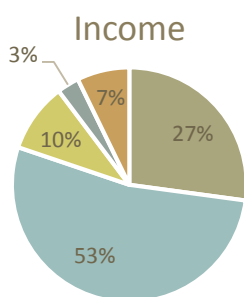
Financial Report

Total Operating Income	\$213,357
Total Operating Expenses	\$206,542
<hr/>	
Total Operating Income Less Expenses	\$6,815

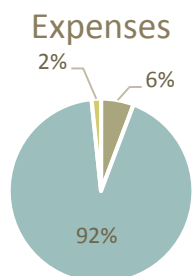
The cost to operate Shining Hope Farms for one day in 2011 was \$566



92 cents of every dollar was spent on our programs



■ Contributions ■ Program Service Fees ■ Grants ■ Fundraisers ■ Other



■ Admin ■ Programs ■ Fundraising

Our Programs

Our programs in 2011 included:

- Hippotherapy**
Shining Hope Farms is recognized by the Federal Government as a healthcare provider able to conduct Physical Therapy, Occupational Therapy, and Speech-language Pathology to children and adults with disabilities.
- Equine Assisted Activities**
A PATH Intl. certified instructor conducts these group lessons where individuals with special needs are taught horseback riding and horsemanship skills. The clients also participate in games and activities while horseback riding. The lessons are recreational in nature and the riders are assisted by a horse leader and side walkers which provide a safe and enjoyable social environment.
- Special Olympics**
Shining Hope Farms trains individuals from Gaston, Lincoln, and Mecklenburg Counties who wish to compete in state level equestrian competitions in Raleigh, as well as taking participants to the competition. We also host a Regional Invitational show for Mecklenburg, Gaston, and surrounding counties Special Olympics' participants at our facilities.
- North Carolina Lions Club Camp Dogwood Program**
Shining Hope Farms provides recreational riding to approximately 110 individuals that come from all across the state to attend Camp Dogwood located in Sherrills Ford, NC These campers are visually impaired adults. The average age of these participants is 59 years old.

Our Participants

We served between 5,500 and 6,000 people at our farm in 2011.

Counties Served:

Gaston, Mecklenburg, Lincoln, and Iredell

Primary Diagnoses/Disabilities Served/Treated:

Cerebral Palsy, Autism, Down Syndrome, Developmental Disabilities, Brain Injuries, Hypotonia, and the like.

2011 Board of Directors

Milinda Kirkpatrick (volunteer non-voting member), Paul Kirkpatrick, Kari Pilbeam, Robert Adams, Sandra Hammitt, Terry Jones, Selina Lee, and Susan Phelps