

# Shining Hope Farms

Annual Report Based on Fiscal Year 2013

Shining Hope Farms is a 501(c)(3) organization whose mission is to enable children and adults with disabilities to achieve functional goals through the use of equine assisted activities and Hippotherapy.

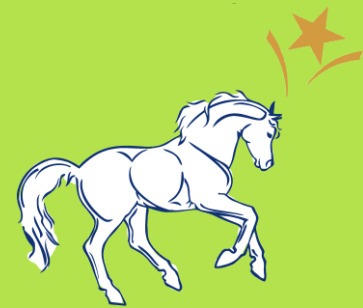
# Shining Hope Farms

Annual Report Based on Fiscal Year 2013

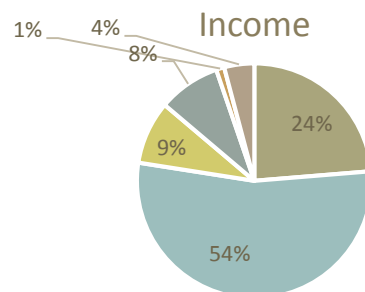
## Financial Report

Total Operating Income	\$366,916
Total Operating Expenses	\$319,158
<hr/>	
Total Operating Income Less Expenses	\$47,758

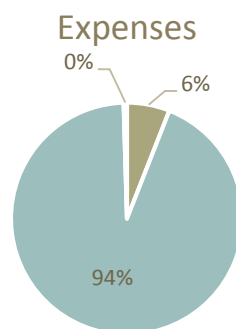
*The cost to operate Shining Hope Farms for one day in 2013 was \$874*



*94 cents of every dollar was spent on our programs*



- Contributions
- Grants
- Hippotherapy Program
- Fundraising Events
- Lessons
- Other



- Admin
- Programs
- Fundraising

## Our Programs

Our programs in 2013 included:

- Hippotherapy**  
This program, conducted by licensed healthcare professionals, provides rehabilitative therapy (occupational therapy, physical therapy, or speech therapy) that uses the equine movement as a treatment tool. The onsite clinics are also used for off-mounted activities to help achieve certain goals. Historically, 85% of our patients who have received treatment have made functional gains helping to improve their quality of life. An emphasis is placed on serving poor and needy families in the community and most of the participants are able to access our program free of charge. In 2013 this program served 85-90 children weekly.
- Therapeutic Riding**  
A PATH Intl. certified instructor conducts these group and private lessons where individuals with special needs are taught horseback riding and horsemanship skills. The clients also participate in games and activities while horseback riding. The lessons are recreational in nature and the riders are assisted by a horse leader and side walkers which provide a safe and enjoyable social environment. In 2013 this program served 45-50 participants weekly.
- Special Olympics**  
Shining Hope Farms trains individuals from Gaston, Lincoln, and Mecklenburg Counties who wish to compete in Special Olympics equestrian competitions. We also host a Regional Invitational show for Mecklenburg, Gaston, and surrounding counties' Special Olympics participants. In 2013 we had 14 participants in this program.
- North Carolina Lions Club Camp Dogwood Program**  
Shining Hope Farms provided recreational riding to approximately 72 individuals in 2013 that come from all across the state to attend Camp Dogwood located in Sherrills Ford, NC. These campers are visually impaired adults. Their average age is 59 years old.

## Our Participants

In 2013 we served upwards of 260 participants in our primary programs.

### Counties Served:

Gaston, Mecklenburg, Lincoln, and Iredell

### Primary Diagnoses/Disabilities Served/Treated:

Cerebral Palsy, Autism, Down Syndrome, Developmental Disabilities, Brain Injuries, Hypotonia, and the like

## 2013 Board of Directors

Kari Pilbeam (Board Chair/Secretary/Treasurer), Delane Clark (Vice-chairman), Terry Jones, Beth Lippincott, Bobbie Long, Charmaine Gallagher, Susie Phelps, Delta Sanders, Joey Townsend, Clay Thompson, Milinda Kirkpatrick (non-voting Executive Director)